



©Frédéric Lelièvre

Wood turtle

Vulnerable in Quebec – Threatened in Canada



CHARACTERISTICS



- Brownish-gray carapace.
- Yellow belly with black spots.
- Orange neck and legs.
- Only begins to reproduce at age 15.

April to June or September to November

Early June to late October

Hibernation November to April

HABITAT



- 200m wide strip of land on both sides of a river, for 3km either side of the turtle's location.
- In spring, the turtle lives by the water in grasses and alder thickets.
- In the summer, it is mostly found on the terrestrial areas: in grasses, alder thickets, open woods and cutting areas.

DISTRIBUTION IN QUEBEC



Source : CDPNQ

THREATS



- Degradation and destruction of its habitat.
- Accidental mortality (roads, agricultural or forestry machinery).
- Destruction of nests by predators.
- Illegal capture.

IN THE 200 M BUFFER ZONE



Maintain a forested riparian buffer strip. Consult municipal by-laws for permitted widths and harvesting rates.



Ensure complete protection of alder groves.



No use of machinery between May 1 and September 30. The buffer zone is reduced to 50 m between October 1 and November 15.



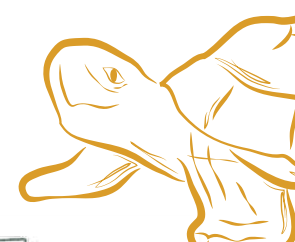
Avoid the establishment of coniferous plantations. Promote a return to mixed natural regeneration.



Avoid building new roads, especially in alder groves.



Reduce speed and increase vigilance on roads and paths between May 1 and September 30 to avoid collisions with turtles.



Illustrations : Sophie-Anne Vachon and Emilie Dumais

For references and to learn more, please visit: foretprivee.ca/biodiversite



Produced by



and



Validated by Yohann Dubois
Ministère des Forêts, de la Faune et des Parcs
Patrice Bourgault, Université de Sherbrooke

Ce projet a été réalisé avec l'appui financier de :
This project was undertaken with the financial support of:



Environnement et Changement climatique Canada

Environment and Climate Change Canada

