

# Cerulean warbler

Threatened in Quebec – Endangered in Canada



Approx. 10 cm

©Ray Hennessy

## CHARACTERISTICS



- Adult male: azure upper body and white underparts, blue-black band across the throat.
- Adult female: turquoise upper body and whitish breast, variegated with yellow.
- Relatively long wings and short tail.



Mid-May



June



Late June to mid-July



Late August to early May

## HABITAT



- Canopy of large trees (24 to 30 m) in mature, old-growth deciduous forests characterized by sparse understory.
- Requires large woodland patches.
- Nests in the tops of large trees.
- Winters in South America.

## DISTRIBUTION IN QUEBEC



Source : CDPNQ



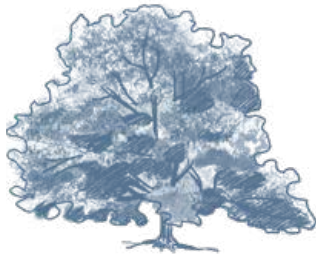
## THREATS



- Logging that contributes to fragmentation and reduction of mature forest areas.
- Tree diseases that reduce the number of large trees.
- Conversion of forests for residential, commercial or agricultural development.
- Reduction of insect populations due to the use of pesticides.
- Collision with man-made structures such as communication towers and wind turbines.



Avoid forestry operations during breeding and rearing periods.



Preserve extensive wooded areas with tall trees.



Follow the recommendations in the *Mature deciduous forests* fact sheet.

Illustrations : Sophie-Anne Vachon and Émilie Dumais

For references and to learn more, please visit: [foretprivee.ca/biodiversite](http://foretprivee.ca/biodiversite)



Produced by



CONSERVATION DE LA NATURE CANADA

and



Ce projet a été réalisé avec l'appui financier de :  
This project was undertaken with the financial support of:



Environnement et  
Changement climatique Canada

Environment and  
Climate Change Canada



Fondation  
de la faune  
du Québec

Québec