



©Frédéric Lelièvre

# Pickerel frog

Likely to be designated as threatened or vulnerable in Quebec



## CHARACTERISTICS

- Brown or coppery body.
- Two rows of dark rectangular spots on back and flanks.
- Inner thighs and snout bright yellow or orange.
- Breathes through the lungs and skin: dependent on water quality and forest soil humidity.

♂ ♀ May – June  
 Egg July



## HABITAT

- Bodies of water and wetlands (beaver ponds, streams, river arms, lakes and peatlands).
- Feeds in wet meadows, fields and forests.
- Mountainous terrain.

## DISTRIBUTION IN QUEBEC

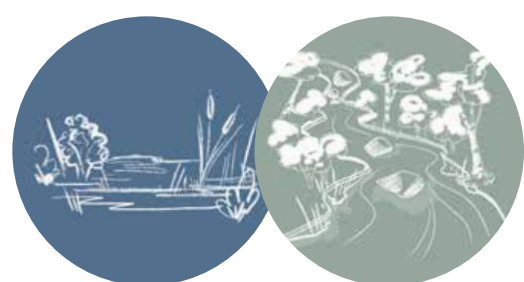


Source : CDPNQ

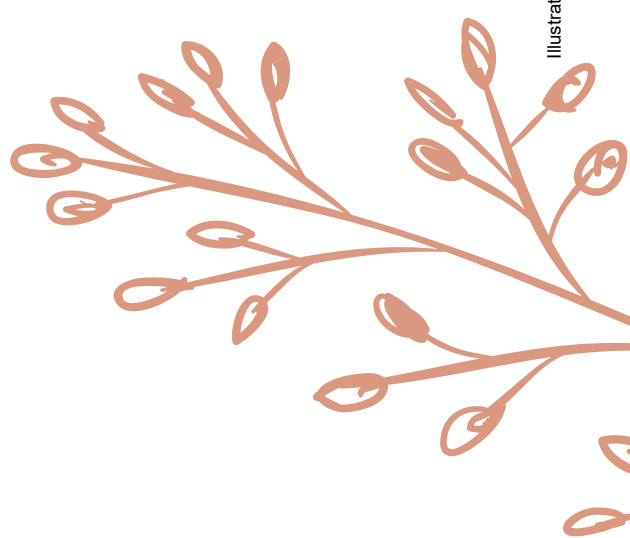


## THREATS

- Conversion of forests for roads, agriculture, urban and cottage development.
- Drainage of wetlands for agricultural use.
- Degradation of water quality.



Follow the recommendations listed in the *Wooded wetlands* and *Mountain streams* fact sheets.



Illustrations : Sophie-Anne Vachon and Émilie Dumais

For references and more information, please visit: [foretprivee.ca/biodiversite](http://foretprivee.ca/biodiversite)



Produced by



Validated by Yohann Dubois  
 Ministère des Forêts, de la Faune et des Parcs  
 Patrice Bourgault, Université de Sherbrooke

Ce projet a été réalisé avec l'appui financier de :  
 This project was undertaken with the financial support of:

