



©Pierre Petitclerc

Downy rattlesnake-plantain *Goodyera pubescens*

Vulnerable in Quebec

15-35 cm



CHARACTERISTICS



- Dense colonies.
- Distinguished from checkered rattlesnake-plantain by the very visible broad, white central vein on the leaves.
- Leaves remain under the snow.
- Spike of small white flowers is carried at the top of a hairy stem.
- Propagation by rhizome or by seed with the help of mushrooms.
- Grows in shade the shade, as it does not tolerate competition.



©Denis Paquette

ALL SEASON



©François Gros d'Aillon

END OF JULY TO SEPTEMBER



©Pierre Petitclerc

SUMMER-FALL

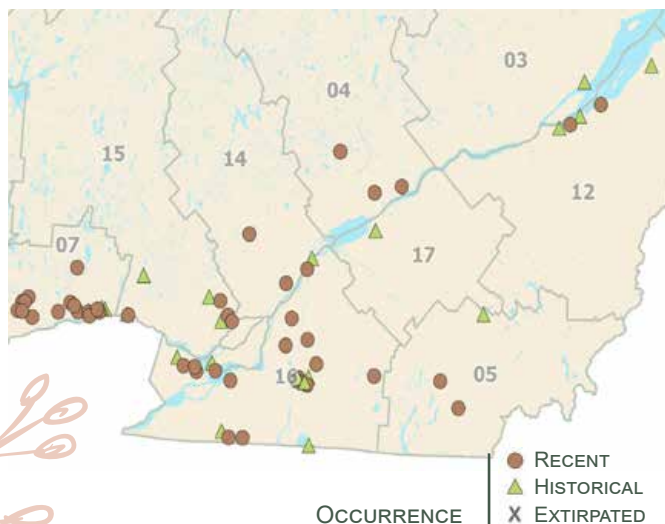


HABITAT



- Mature deciduous or mixed forests, on dry or humid soils.
- Flat or sloped lands near streams.

DISTRIBUTION IN QUEBEC



THREATS



- Habitat loss (residential development and creation of new roads).



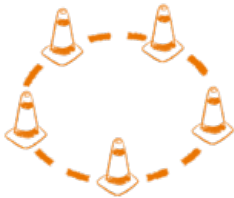
SENSITIVITY OF SPECIES TO DISTURBANCES

Does not tolerate heat or dry conditions associated with prolonged exposure.

Poor tolerance to excessive moisture or dryness.

Vulnerable to trampling, as its buds are at ground level.

ADAPT PRACTICES BASED ON SPECIES SENSITIVITY



- Identify the occupied zone, which corresponds to where the plants are located, and a buffer zone of 40 meters. Specific guidelines apply to each zone.
- If the exact plant location cannot be established, apply the guidelines for the occupied zone to the entire forest stand.

AT ALL TIMES IN THE OCCUPIED AND THE 40 METER BUFFER ZONES

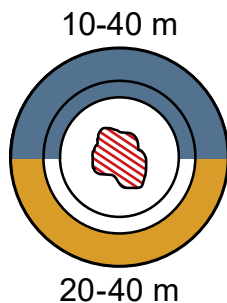


Prevent changes to drainage and the formation of ruts by scheduling work when soils have their highest load-bearing capacity, such as during dry periods or when the ground is frozen.

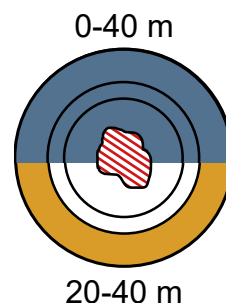


No new road construction.

SEASONAL CONSIDERATIONS IN THE 40 M BUFFER ZONE



Minimise skid trails.



Partial tree harvesting allowed (35%).

Winter

Summer

Illustrations: Sophie-Anne Vachon and Émilie Dumais



Occupied zone

For references and to learn more visit: foretprivee.ca/biodiversite



Produced by



CONSERVATION DE LA NATURE CANADA

and



Ce projet a été réalisé avec l'appui financier de :
This project was undertaken with the financial support of:



Environnement et Changement climatique Canada

Environment and Climate Change Canada



Fondation de la faune du Québec

Québec