



SPECIES DIFFICULT TO IDENTIFY, REFER TO A PROFESSIONAL.

© L. Wallis

Narrow-leaved glade fern

Homalosorus pycnocarpus

Likely to be designated as threatened or vulnerable in Quebec



CHARACTERISTICS

- 20-30 pairs of alternate segments per leaf.
- To distinguish it from the ostrich fern¹, divided only once.
- To distinguish it from the Christmas fern², no "little thumb".
- Sores elongated (comma-shaped) close together.
- Fragile.



ALL SEASON



JULY TO SEPTEMBER



¹ OSTRICH FERN



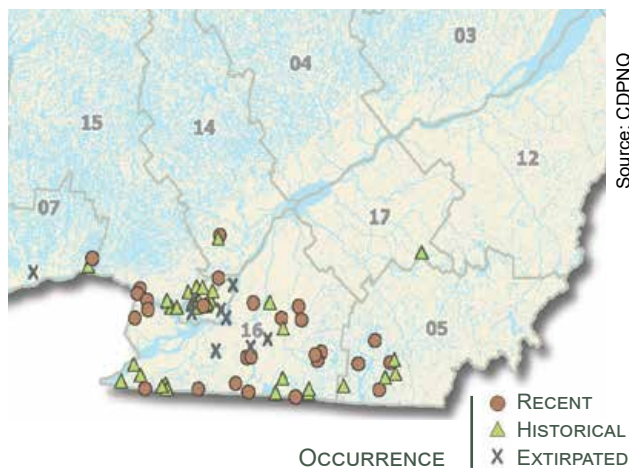
² CHRISTMAS FERN



HABITAT

- Swampy environments.
- Humid deciduous forests.
- Shaded areas.

DISTRIBUTION IN QUEBEC



THREATS

- Significant opening of the forest canopy.
- Destruction of its habitat.
- Invasive exotic species (buckthorn and european reed).





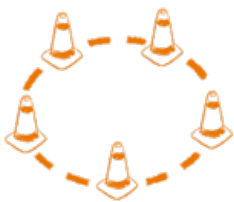
SENSITIVITY OF SPECIES TO DISTURBANCES

Requires shade to maintain soil moisture.

Poor tolerance to excessive moisture or dryness.


Extremely vulnerable to mechanical damage.

ADAPT PRACTICES BASED ON SPECIES SENSITIVITY



- Identify the occupied zone, which corresponds to where the plants are located, and a buffer zone of 40 meters. Specific guidelines apply to each zone.
- If the exact plant location cannot be established, apply the guidelines for the occupied zone to the entire forest stand.

AT ALL TIMES IN THE OCCUPIED AND THE 40 M BUFFER ZONES





Avoid modifying the drainage and creating ruts by planning work when the bearing capacity of the soil is at its greatest, during periods of dryness or when the ground is frozen.


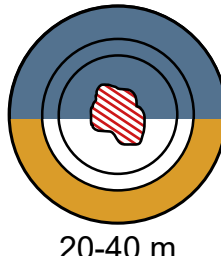


No new road construction.

SEASONAL CONSIDERATIONS IN THE OCCUPIED AND THE 40 M BUFFER ZONES





Minimize skid trails.

Harvesting permitted, providing that no more than 25% of light is allowed to reach the ground.

Winter
Summer

 Occupied zone

Illustrations : Sophie-Anne Vachon and Émilie Dumais

For references and to learn more, please visit: foretprivee.ca/biodiversite

